



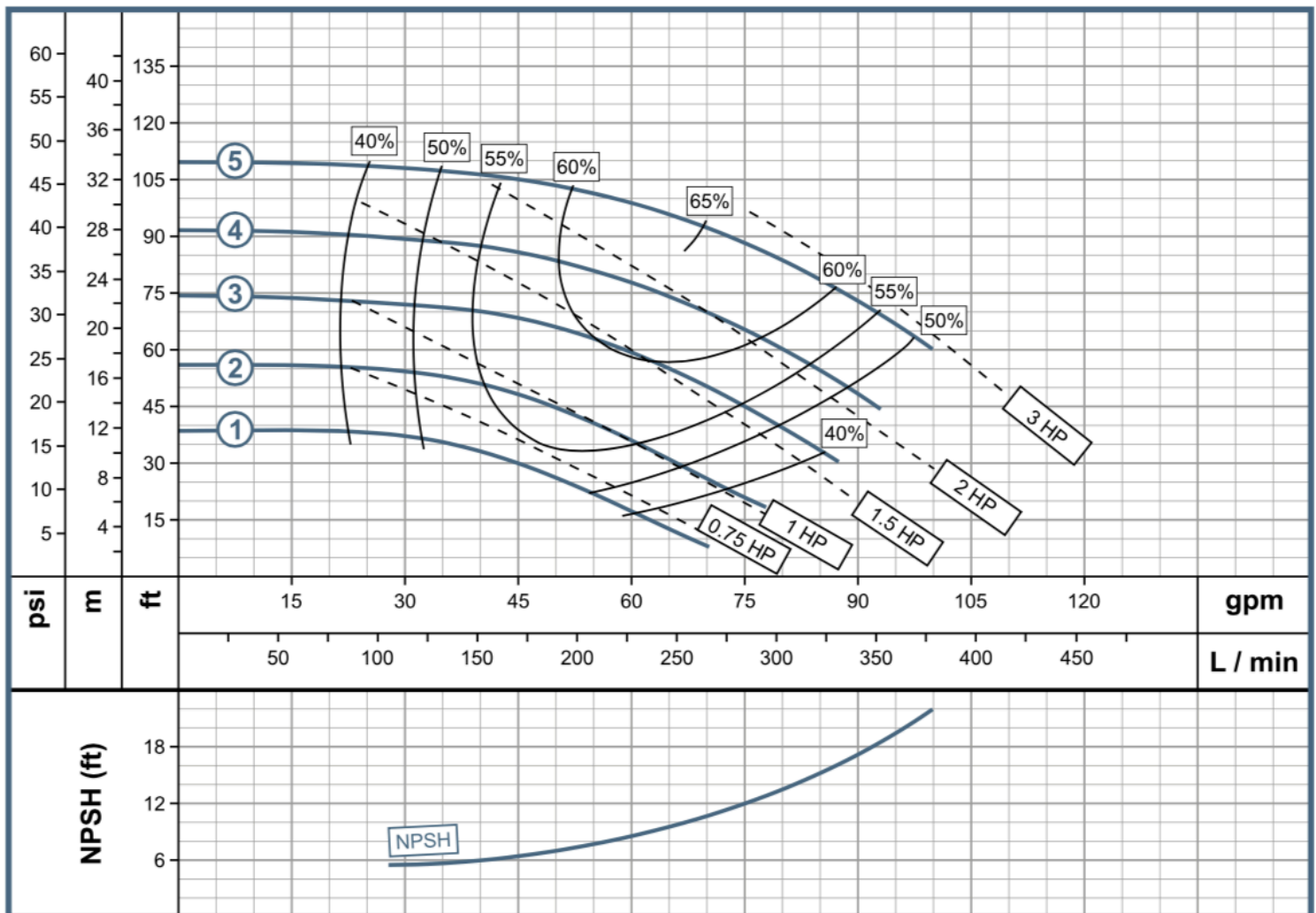
GE 1.25A

3600 RPM

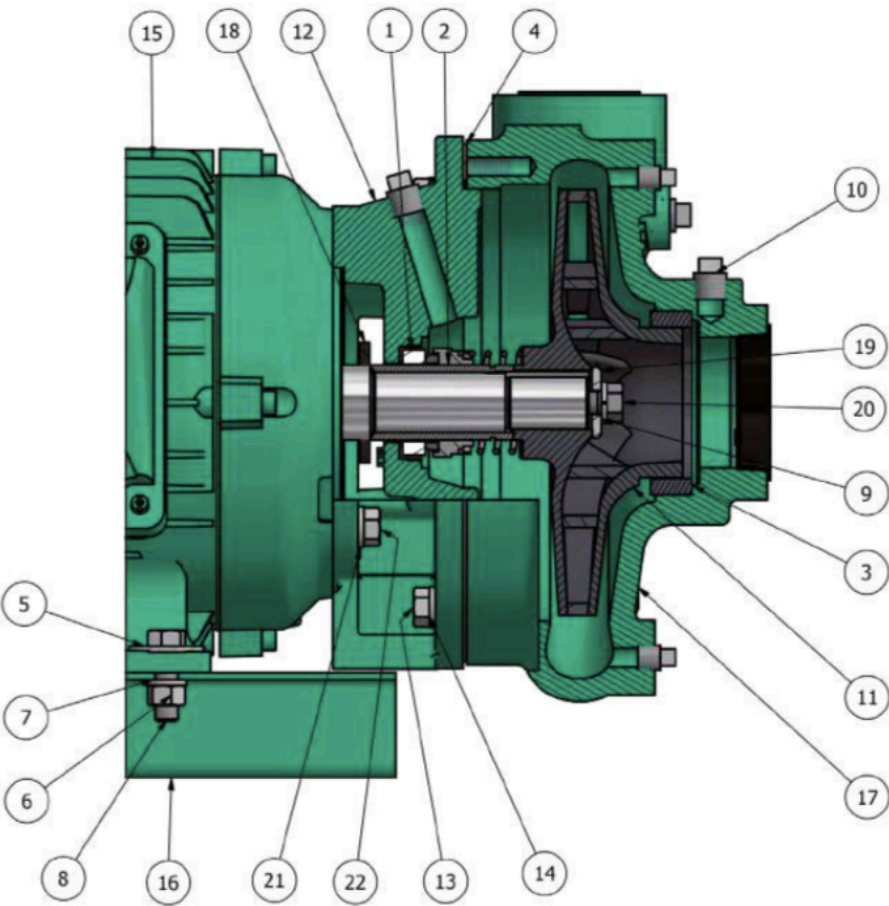
| Pump Features | | | | |
|---------------|-----------------|------------|------------------------------|------------|
| Pump Type | Design | | Impeller | |
| End Suction | Close Coupled | | Enclosed, Stainless Steel. * | |
| Stages | Mechanical Seal | | Fluid temperature range | |
| 1 | 5/8" T6 | | 26.6°F to 225°F | |
| Model | Reference | Ø Suction | Ø Discharge | Ø Impeller |
| 1 GE 1.25A 7 | 1B0210S | 1 1/2" NPT | 1 1/4" NPT | 3.250" |
| 2 GE 1.25A 10 | 1B0211S | 1 1/2" NPT | 1 1/4" NPT | 3.750" |
| 3 GE 1.25A 15 | 1B0212S | 1 1/2" NPT | 1 1/4" NPT | 4.250" |
| 4 GE 1.25A 20 | 1B0213S | 1 1/2" NPT | 1 1/4" NPT | 4.750" |
| 5 GE 1.25A 30 | 1B0214S | 1 1/2" NPT | 1 1/4" NPT | 5.130" |

| Motor Features | | | |
|----------------|-------|----------------|----------------|
| Drive | | Speed (rpm) | Frequency (Hz) |
| Electric | | 3600 (nominal) | 60 |
| Power (HP) | Phase | Voltage (V) | Frame |
| 0.7 | 3 | 230/460 | 56J |
| 1 | 3 | 230/460 | 56J |
| 1.5 | 3 | 230/460 | 56J |
| 2 | 3 | 230/460 | 56J |
| 3 | 3 | 230/460 | 56J |

Performance Curve



*NOTA: EL IMPULSOR ESTANDAR ES EN HIERRO FUNDIDO, PARA IMPULSOR EN ACERO INOXIDABLE SE VA SOBRE PEDIDO

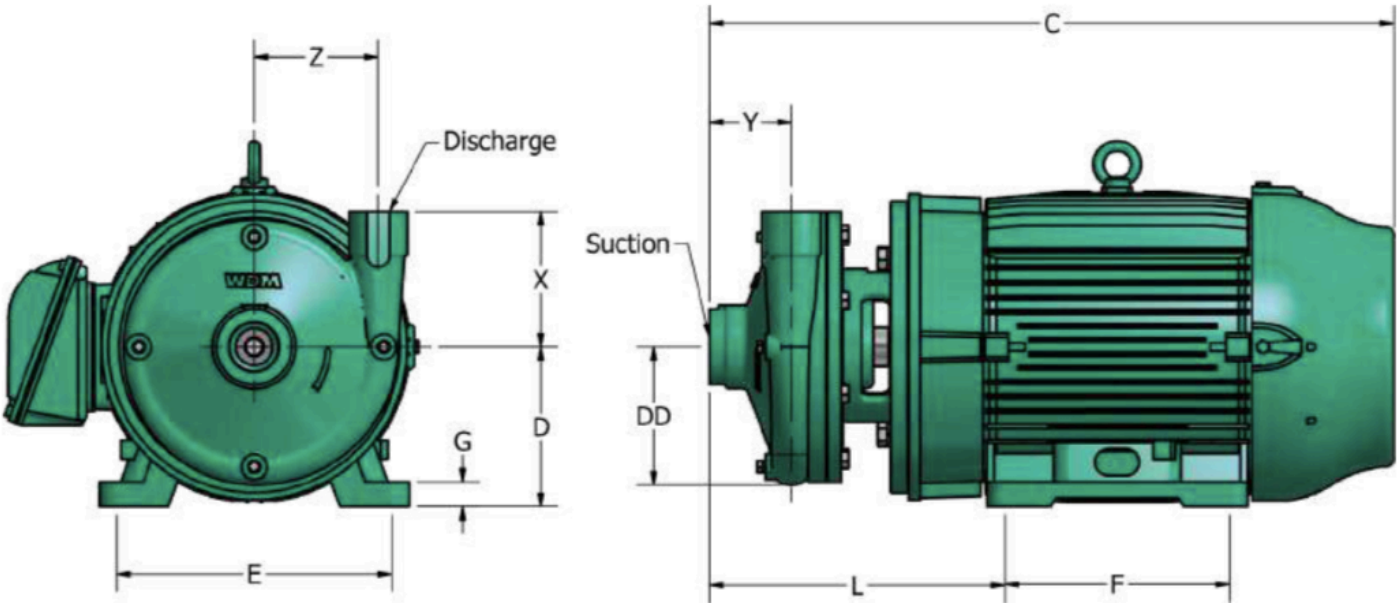


| ITEM | QTY | DESCRIPTION | MATERIAL |
|------|-----|----------------------|--------------------------|
| 1 | 1 | MECHANICAL SEAL | CARBON /CERAMIC / BUNA |
| 2 | 1 | SHAFT SLEEVE | STAINLESS STEEL AISI 304 |
| 3 | 1 | FRONT CASE WEAR RING | BRONZE B148 |
| 4 | 1 | GASKET CASING | STANDARD PAPER GASKET |
| 5 | 4 | WASHER | CARBON STEEL |
| 6 | 4 | HEX NUT | CARBON STEEL |
| 7 | 4 | LOCK WASHER | CARBON STEEL |
| 8 | 4 | HEX CAP SCREW | CARBON STEEL |
| 9 | 1 | LOCK WASHER | STAINLESS STEEL AISI 304 |
| 10 | 1 | PIPE PLUG | CARBON STEEL |
| 11 | 1 | IMPELLER | STAINLESS STEEL AISI 304 |

| ITEM | QTY | DESCRIPTION | MATERIAL |
|------|-----|------------------|--------------------------|
| 12 | 1 | BRACKET | CAST IRON ASTM A48 |
| 13 | 6 | HEX CAP SCREW | CARBON STEEL |
| 14 | 6 | LOCK WASHER | CARBON STEEL |
| 15 | 1 | MOTOR | CHECK INFO WITH SUPPLIER |
| 16 | 1 | BASE RAIL | CARBON STEEL |
| 17 | 1 | CASING | CAST IRON ASTM A48 |
| 18 | 1 | SLINGER | BUNA |
| 19 | 1 | WASHER, IMPELLER | STAINLESS STEEL AISI 304 |
| 20 | 1 | HEX BOLT | STAINLESS STEEL AISI 304 |
| 21 | 4 | LOCK WASHER | CARBON STEEL |
| 22 | 4 | HEX BOLT | CARBON STEEL |

*NOTA: EL IMPULSOR ESTANDAR ES EN HIERRO FUNDIDO, PARA IMPULSOR EN ACERO INOXIDABLE SE VA SOBRE PEDIDO

Drawing 2



| Dimensions 3600 rpm - 2 poles (inches) | | | | | | | | | | | | | | | | |
|--|---------|---------|----------|--------|--------|--------|--------|-------|-------|--------|--------|--------|--------|-------|--------|--------|
| Model | Ref. | Drawing | C | D | DD | E | F | G | H | L | X | Y | Z | Frame | Suc | Disc |
| GE 1.25A 7 | 1B0210S | 2 | 17 3/16" | 4 1/2" | 3 1/2" | 4 5/8" | 3 5/8" | 7/16" | 7/16" | 4 5/8" | 3 1/2" | 2 1/2" | 3 1/6" | 56J | 1 1/2" | 1 1/4" |
| GE 1.25A 10 | 1B0211S | 2 | 18 3/16" | 4 1/2" | 3 1/2" | 4 5/8" | 3 5/8" | 7/16" | 7/16" | 5 5/8" | 3 1/2" | 2 1/2" | 3 1/6" | 56J | 1 1/2" | 1 1/4" |
| GE 1.25A 15 | 1B0212S | 2 | 19 3/16" | 4 1/2" | 3 1/2" | 4 5/8" | 3 5/8" | 7/16" | 7/16" | 6 5/8" | 3 1/2" | 2 1/2" | 3 1/6" | 56J | 1 1/2" | 1 1/4" |
| GE 1.25A 20 | 1B0213S | 2 | 20 3/16" | 4 1/2" | 3 1/2" | 4 5/8" | 3 5/8" | 7/16" | 7/16" | 7 5/8" | 3 1/2" | 2 1/2" | 3 1/6" | 56J | 1 1/2" | 1 1/4" |
| GE 1.25A 30 | 1B0214S | 2 | 21 3/16" | 4 1/2" | 3 1/2" | 4 5/8" | 3 5/8" | 7/16" | 7/16" | 8 5/8" | 3 1/2" | 2 1/2" | 3 1/6" | 56J | 1 1/2" | 1 1/4" |



IMAGEN ILUSTRATIVA

*El tamaño real de la construcción puede variar, tamaños mencionados son sólo para fines de referencia.